

NHS

South East Coast
Ambulance Service
NHS Foundation Trust



Green Plan Development

David Ruiz-Celada

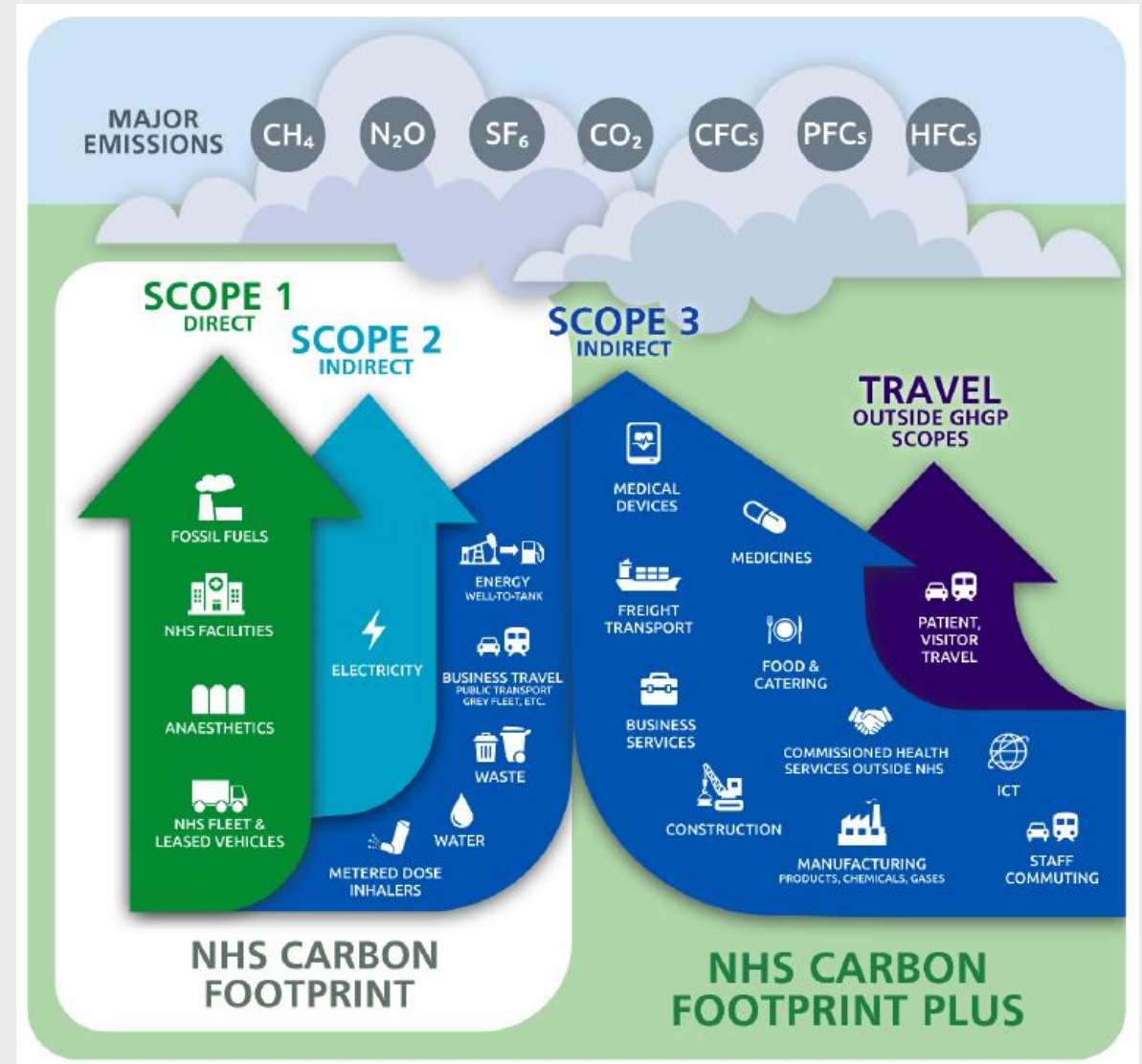
Executive Director for Planning & Business Development

31 March 2022

Best placed to care, the best place to work

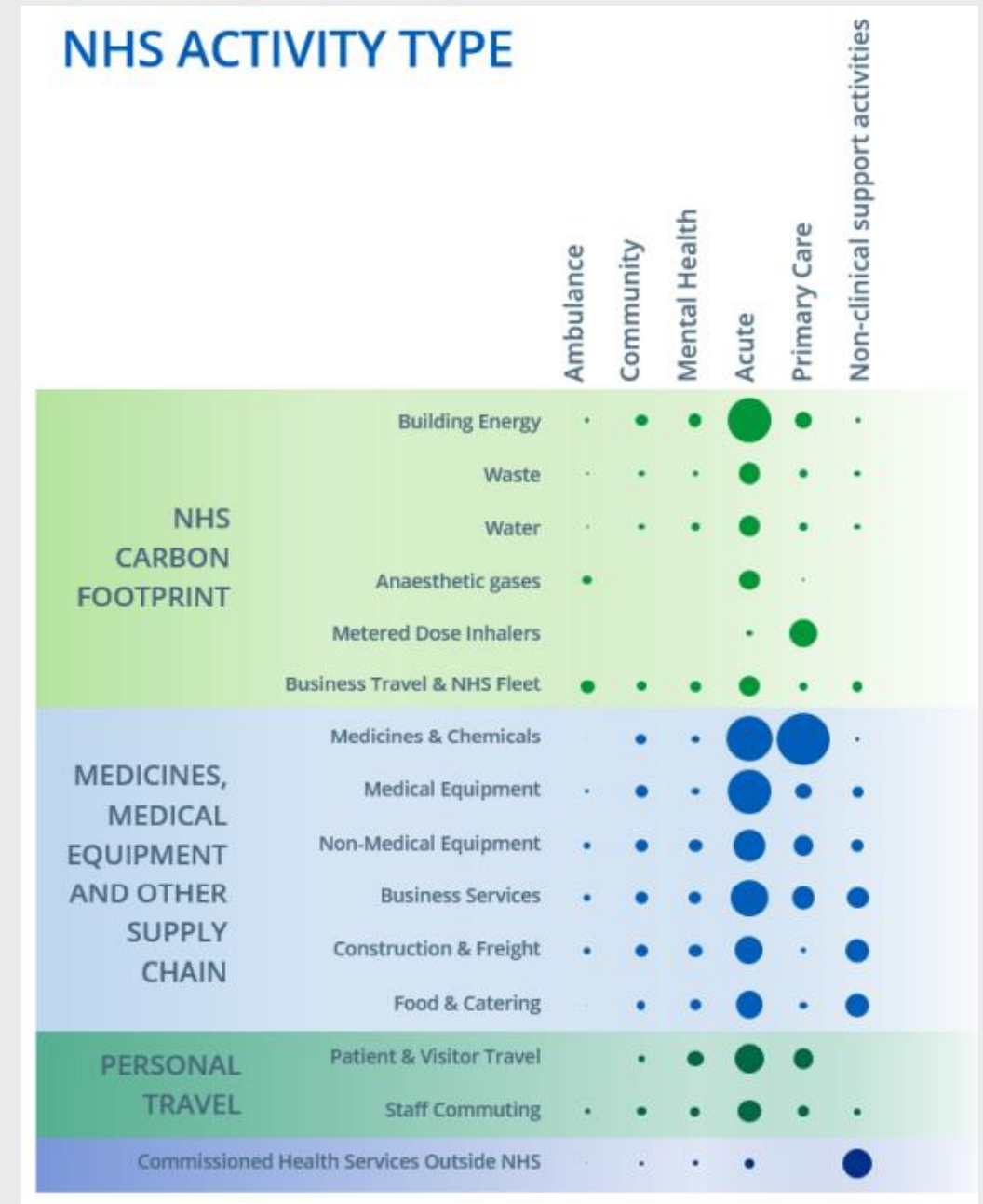
Our ambition

1. Ensure the Trust is supporting the NHS-wide ambition to become the world's first healthcare system to reach net zero carbon emissions:
 - Emissions the Trust controls directly – 80% reduction by 2028-2032; net zero by 2040
 - Emissions the Trust can influence – 80% reduction by 2036-2039; net zero by 2040
2. Prioritise interventions which improve patient care and community wellbeing whilst tackling climate change and broader sustainability issues
3. Enable the Trust to plan and make capital investments whilst increasing efficiencies



Key areas of focus

- Sustainable models of care
- Travel and transport
- Facilities, estates, energy and waste management
- Digital enablement
- Supply chain
- Education and learning



Sources of carbon emission by activity type and setting of care

Our approach

Phase 1

Objective 1 Establish the Baseline

- Establish a baseline “as-is” and breakdown by source for all of SECAmb’s direct carbon footprint

Development of Green Plan

Objective 2 Develop a Roadmap

- Develop a roadmap, inclusive of sensible and evidence-based interim reduction targets up to 2045
- Detailed deliverables scoped for the next 3-years (inclusive of quick wins and existing programmes already in place)
- Detailed 10-year plan in line with direct scope targets
- High level plan to 2045 and achieving full net-zero

Implementation of Green Plan

Phase 2

Objective 3 Monitoring & Reporting

- Identify a clear methodology for annual monitoring and reporting against evidence-based targets
- Board assurance framework for emissions monitoring to be embedded

Objective 4 Resourcing & Governance

- Identify the resources, investment profiles and internal governance arrangements required to ensure delivery against the plan
- Review of capital and revenue plans
- Review of associated enabling strategies (i.e. estates and fleet)

Phase 3

Not in scope (yet)
Delivery

- Delivery expected from Q4 22/23
- Alignment of resources and investment from 23/24

Ongoing Delivery

Approximate Timeline

